

## APPENDIX A

### To Caret or Not To Caret, That is the Question

By Sandra Aberkalns and Ilene Fox

Oct. 2000

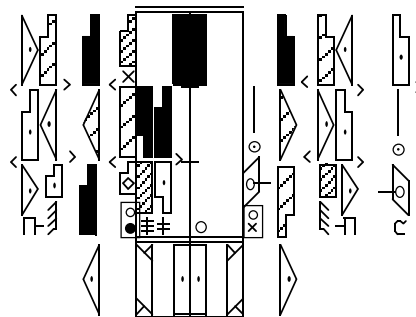
*This paper was supported, in part, by the Ann Hutchinson Guest Research Fund which was established at the Dance Notation Bureau to support research by DNB staff notators.*

#### 1. Introduction

- 1.1 In Labanotation, for those parts of the body needing a presign, we are required to use carets to indicate that symbols in the same column are for the same part of body.
- 1.2 At the 1999 ICKL conference, Jacqueline Challet Haas presented a paper titled *KIN - LAB Issues KIN usages and rules* which listed differences between Kinetography Laban (KIN) and Labanotation (LN).
- 1.3 For many of us, reading this paper was the first time we were aware that KIN and LN had different rules about the requirement of carets.
- 1.4 This paper is intended to explore the differences in the use of carets in KIN and LN, to clarify where rules are similar and where they are different, and to propose changes for unification.

#### 2. Labanotation

- 2.1 In Labanotation, anytime there are consecutive movements for any part of the body that needs to be defined with a presign, either the presign must be repeated or a caret must be used. This is true for the parts of the legs, arms, torso, and the head.



2a

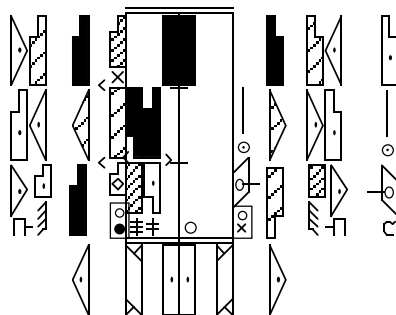
2.2 Currently, there is some difference of opinion as to whether carets are needed for return to normal. In the above example, they have not been used.

2.3 As example 2a shows, it can often be difficult to fit in the carets when there is complex movement. If you read carefully you will see there is a caret missing in count 2 for the lower leg. The hand movements have also been moved out a column to facilitate the placement of the carets. While with dense notation it may sometimes be nice to have more space between columns, it may not always be possible, for example, when there are several dancers on a page. Needing the extra columns just for carets makes scoring difficult.

### 3. Kinetography Laban

3.1 In KIN:

- within the staff  
carets are used for parts of the leg requiring a presign, or the presign must be repeated [this is the same as in LN].
- in the columns outside the staff that have a designated meaning for a symbol without a presign  
carets are used for parts of the body requiring a presign, or the presign must be repeated. This means that carets are used in the body column (the first column outside the staff) where a symbol without a presign is understood to be the upper body (no caret is needed for upper body) and in the arm column, where a symbol without a presign is understood to be for the whole arm (no caret is needed for whole arm) [this is the same as in LN].
- in the other columns outside the staff  
for parts of the body requiring a presign (such as hands and head), carets are not used and the presign does not need to be repeated [this is not the same as in LN].



3a

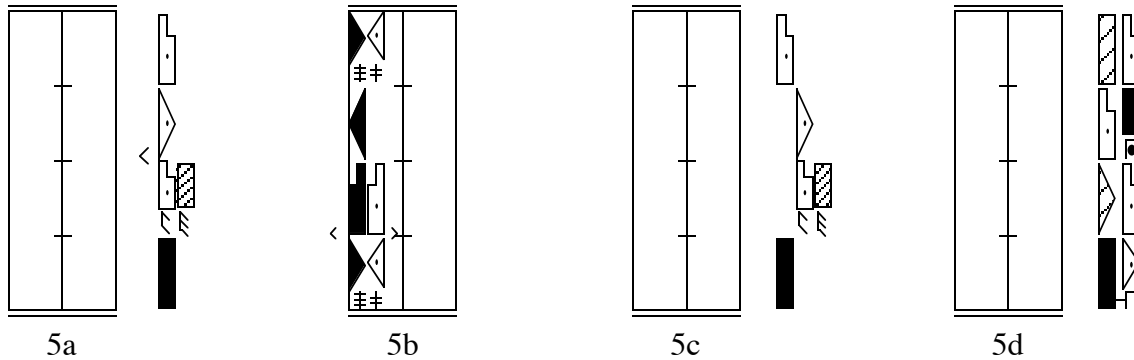
## 4. Our Experience

- 4.1 As readers/stagers, it has been our experience that we automatically look back to see what presign has last been used whenever we see a symbol in a column that does not have a defined meaning. A symbol alone in the arm column is clearly for the whole arm, when there is a symbol alone in columns beyond the arm column, the part of the body referred to needs to be defined. If a caret has been left out, it does not impede our comprehension, we still look back to see what presign was last used.
- 4.2 From a notator's perspective, writing a lot of carets when dealing with a dense, complex score can create complications. Sometimes we have accommodated column usage to put carets in. Other times we have simply squeezed them in wherever, and however we could after all the movement is written, making the notation unreadable. Leaving space for carets is not part of the movement analysis process.
- 4.3 As checkers of scores or of our student's work, because it is a rule, we look for missing carets, point them out and require that they be added even though the notation is perfectly clear without them.
- 4.4 As a result of our experience and in the interest of unification, we have reexamined the rules for carets and formulated a proposal.

## 5. Proposal

- 5.1 **In the arm gesture, leg gesture and inner subsidiary (ISC) columns, where a symbol without a presign is understood to be for the whole limb, carets must be used or a presign repeated if the column is used for a part of a limb.** [This is not a change for either KIN or LN.]
  - 5.1.1 The inner subsidiary column (ISC) is often used for the whole leg, as when there is a new direction and a new rotation for the whole leg. No presign or caret is needed. To be consistent with the arm and leg gesture columns, it is necessary to use carets or repeat the presign when the column is used for parts of the leg.
  - 5.1.2 In example 5a, a caret is used in count 3 to indicate that the movement to the side is for the upper arm. In count 4, since there is no caret and the presign has not been repeated, the whole arm goes forward middle.

5.1.3 In example 5b, carets are used in count 2 to show that the movement is still for the upper and lower legs. Count 3 shows a movement for the whole leg. In count 4, the presigns have been repeated. A caret for the lower leg would be incorrect as the previous symbol is not for the lower leg. Since the presign was repeated for the lower leg, we found it easier to read if we repeated both presigns. A caret could have been used for the upper leg.



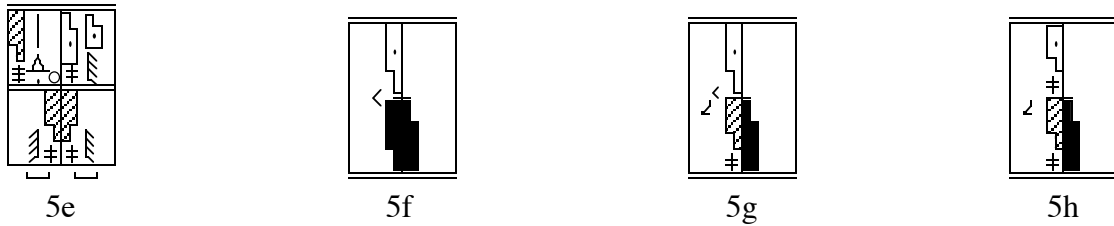
5.1.4 If carets are needed in the leg gesture column, the ISC, and the body column, care should be taken to leave room for carets, to avoid the problem met in 2a. However, in those cases where there is no possibility of confusion and fitting in the caret would make the notation unreadable, the writer can use discretion in deciding whether or not to omit the caret.

5.2 **In the columns beyond the arm columns, carets will not be necessary.** Once a body part has been named in a specific column, subsequent movements are understood to be for that same part of the body. If there is a considerable gap between movements for a part of the body, it is recommended to repeat the presign. When another part of the body is indicated, then subsequent movements are for the new body part. [This is a change for LN but not for KIN.]

5.2.1 In example 5c, the movement in count 3 is for the upper arm. In count 4, the whole arm goes forward middle, the symbol is in the arm column.

5.2.2 In example 5d, the forward middle direction in count 2 is for the thumb facing. In count 3, the movement in that column is specified to be for the palm. The next forward middle direction, count 4, is also understood to be for the palm.

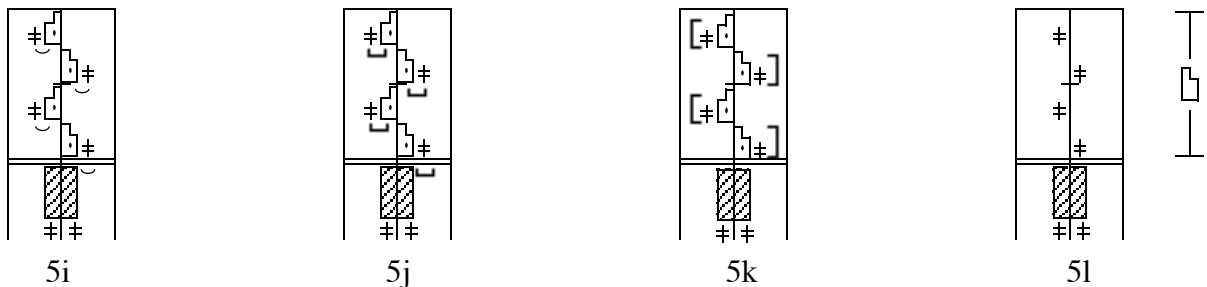
5.3 **In the support column, carets will not be used to indicate the same part of the body.** At the 1983 ICKL conference, it was voted that preferred usage for writing non-foot supports is to repeat the appropriate presigns. See example 5e.



5.3.1 Repeating the presign was favored because of confusion resulting from multiple interpretations of the use of the caret in certain contexts. In addition to being used for the same part of the body, carets are used in the support column when one is to shift instead of step, see example 5f. In some contexts, as in 5g, it is not clear which usage of the caret is intended. 5g could be interpreted as a shift onto the foot or as a step onto the knee in middle level.

5.3.2 It is proposed here that we make it a rule that the presign always be repeated, rather than just a preference. This rule would apply to the ISC as well, when it is used as a support column. See examples 5e and 5h. [This is a change for KIN and LN.]

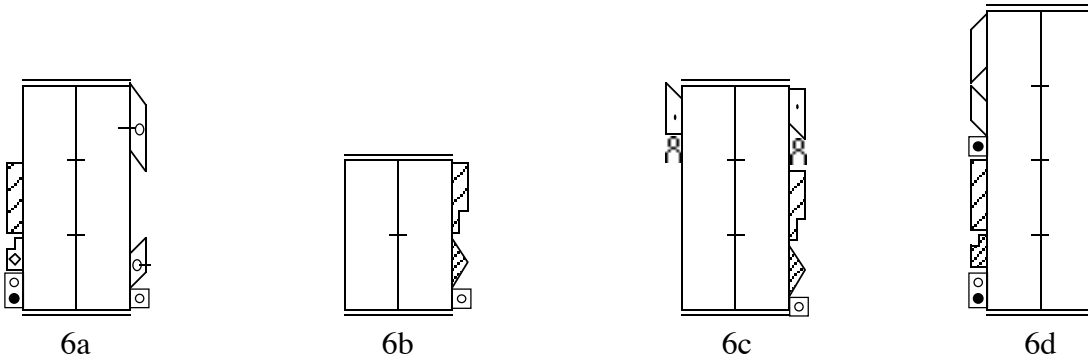
5.3.3 For fast movements, when it may be difficult to include the presign, a number of solutions were given in the 1983 Proceedings, reproduced here as examples 5i-l.



## 6. Body Columns

6.1 We have identified three main options for the use of carets in the body columns. The first option is to do away with carets in the body columns, just as in the columns beyond the arm columns. However this has implications for upper body indications, which currently don't require presigns when placed in the first columns outside the staff. (See 6.1 - 6.1.4) The second option is to require carets in the first columns outside the staff, preserving the ability to indicate upper body movement without a presign, but not to require them in any additional body columns that are used. Many notators find a need for two body columns on each side of the staff. (See 6.2 - 6.2.3) The third option is to require carets in all body columns. (See 6.3) Section 6.4 discusses other methods that have been used by some notators.

6.2 One possible proposal is to extend the proposal to do away with carets so that it applies to the body columns as well. Once a body part, such as torso or chest, is identified, any subsequent instructions will be for that body part until a new body part is named. This would apply whether you have one, two or more body column(s) on each side of the staff. See example 6a. [This is a change for KIN and LN.]



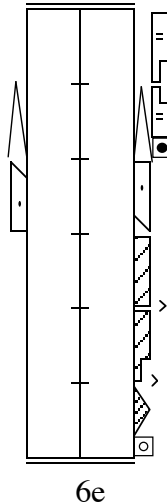
6.2.1 This would require a change to our established understanding of column usage for the upper body. Currently, in both KIN and LN, a direction symbol in the body column without a presign is understood to be upper body. Without a caret, it would not be possible to distinguish an upper body movement from a symbol intended to be for a previously specified part of the body. See example 6b.

6.2.2 Upper body is rarely used by LN. It is used more by KIN.

6.2.3 If the proposal not to use carets in the body columns is adopted, we would also need to agree to use an upper body presign for movements of the upper body rather than having columns defined as upper body. Adopting this proposal, and using upper body presigns, would result in greater flexibility in column usage. See example 6c and 6d.

6.2.4 Adopting this proposal for the body columns would also mean the most change to the system. The two possibilities discussed below would result in less change.

6.3 Another possibility for dealing with the body columns is to agree to use carets in the first columns outside the staff, for any parts of the body except upper body. Any symbol without a presign or caret would be understood as upper body. If additional body columns are added, no carets would be needed in these additional columns. See example 6e. If it becomes necessary to put upper body movement in these additional body columns, the upper body presign would have to be used. [This is a change for KIN and LN.]

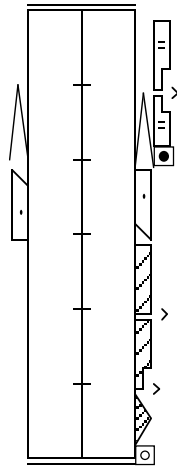


6.3.1 Note, this would mean that carets are not needed for the upper body, just as they are not needed for whole arm or whole leg. The first columns outside the staff would be defined as the upper body, with all symbols without a presign or caret understood to be for the upper body.

6.3.2 The torso and its parts could still be placed in the first column outside the staff. It would just be necessary to use presigns and carets.

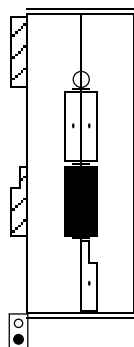
6.3.3 Adopting this option would result in no longer needing as many carets without making a change to upper body usage.

- 6.4 A third possibility is to retain the current rule. We would continue to use carets in all body columns for all parts of the body except upper body. Upper body would still not need presigns or carets. See example 6f. [This is not a change for KIN and LN.]

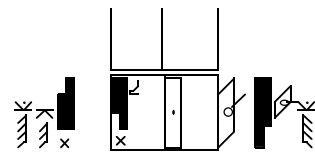


6f

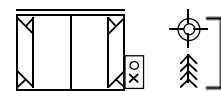
- 6.5 Some notators have glossarized that when a particular presign is used below the staff, it identifies that column as being for that part of the body. No carets or presigns are used. See example 6g. (This is not to be confused with the placement of a presign below a staff for space reasons without explicitly stating in the glossary that it replace the use of carets). Some notators have used a key at the start of a scores to define a column for a whole score. See example 6h which shows a key below the notation for dancer N2. In both cases, all symbols in that column are understood to be for that part of the body, no presigns or carets are needed. This is another option for us to consider. [This is a change for KIN and LN.]



6g



N2



(For All)

6h

## **7. Addendum: For future research**

- 7.1 Example 5e raised some issues when the Research Panel read the paper
- 7.2 We originally had a second horizontal staple in count one attached to the movement for the right hand, intending to indicate it was still a support. However, Research Panel members felt it was not necessary.
- 7.3 There was some difference of opinion as to how long that column remains a support column and how to cancel it. Is a horizontal staple needed linking the ISC with the gesture column in order for that column to again become a gesture column? If this is the case, is one needed for the left ISC in count 1?

## **8. Summary of Proposal**

- 8.1 In the arm gesture, leg gesture and inner subsidiary (ISC) columns, where a symbol without a presign is understood to be for the whole limb, carets must be used or a presign repeated if the column is used for a part of a limb. [This is not a change for either KIN or LN.]
- 8.2 In the columns beyond the arm columns, carets will not be necessary. [This is a change for LN but not for KIN.]
- 8.3 In the support column, carets will not be used to indicate the same part of the body. [This is a change for LN and KIN.]
- 8.4 There are three main options for consideration for the body column:
  - 8.4.1 Do away with carets in the body columns, just as in the columns beyond the arm columns. This would result in the need to use the upper body presign for upper body movements.
  - 8.4.2 Require carets in the first columns outside the staff, preserving the ability to indicate upper body movement without a presign, but not to require them in any additional body columns that are used.
  - 8.4.3 Require carets in all body columns.